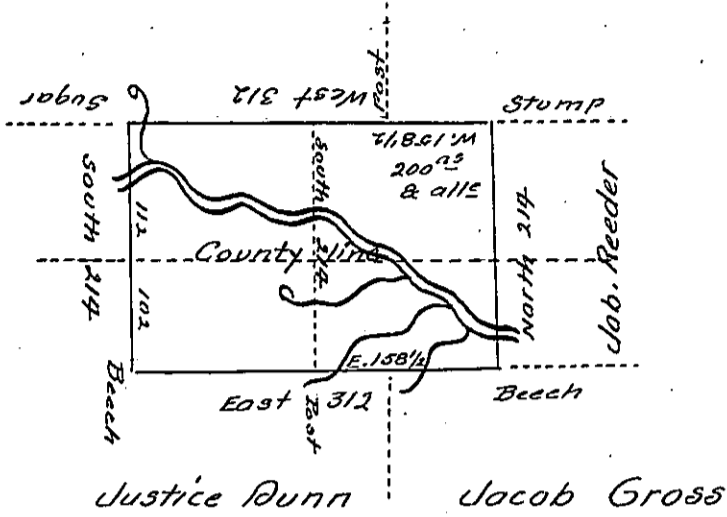


James Campbell



A Draught of a tract of Land on the Waters of Conneattee creek part in McKeen Township Erie County and part in _____ Township Crawford County and Surveyed the 11th of December 1801 for Jane Campbell by Virtue of her actual settlement &c. and resurveyed the 29th of November 1803 in pursuance of a Warrant granted to the said Jane Campbell Dated the 10th of May 1803 Containing 393 acres and 96 perches, allowance &c.

John Cochran D.S.

William McArthur D.S.

To Samuel Cochran Esqr
Surveyor General

IN TESTIMONY that the above is a copy of the original remaining on file in the Department of Internal Affairs of Pennsylvania, made conformably to an Act of Assembly approved the 16th day of February, 1833, I have hereunto set my Hand and caused the Seal of said Department to be affixed at Harrisburg, this _____ tenth _____ day of _____ June _____ 1904

Joseph P. Brown
Secretary of Internal Affairs.